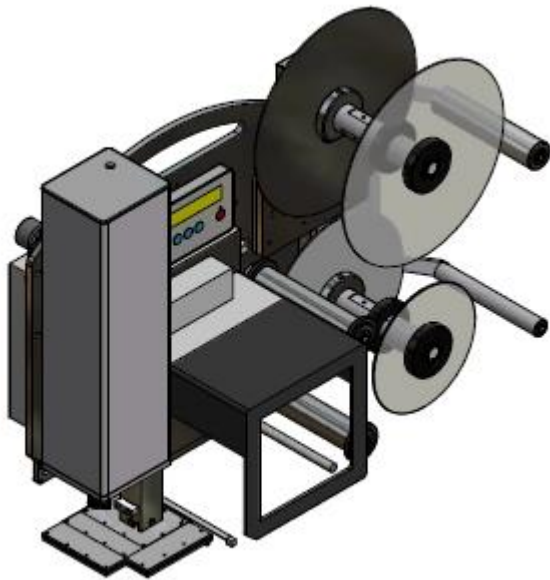


## Legi-Air 4050B-EL



### Technical Specifications:

|                            |   |
|----------------------------|---|
| Printing Technology        | Thermal transfer or direct thermal  |
| Print Resolution           | 8 dots / mm (203 dpi)<br>12 dots / mm (300 dpi)<br>24 dots / mm (600dpi)  |
| Print Speed                | Up to 400 mm per second   |
| Label Size                 | Tamp-Blow Standard from 12,5 x 7 to 120x160mm/160x120mm, depending on label quality the label length is limited |
| Tamp Sizes                 | -   |
| Label Gap                  | minimum 3 mm  |
| Label Roll                 | 300 mm outside diameter up to 450 mm, core 76mm (3"), outside winding   |
| Data Interface             | All current interfaces (details in prospect print engines)  |
| Controller Interface       | Volt free outputs (relays), opt coupler inputs, M12 connector for photocell and alarm lamp                      |
| Maintenance Interval       | According to interval display   |
| Performance Data           | Up to 70 labels per minute, performance data depends on label size, text change and stroke                      |
| Application Accuracy       | Standard: up to $\pm 1$ mm on stopped product (depending on application distance, and label size)               |
| Print-Apply-Trigger        | Reflex sensor, light barrier, inductive or capacitive sensor, micro switch, volt free contact (PLC)             |
| Alarm System               | Standard: LED error message in text display, volt free contact (PLC), optional: 3-coloured alarm lamp           |
| Compressed Air Consumption | 0,3 up to 3 l per applying cycle, depending on label size, type of applicator and setting                       |
| Compressed Air Connection  | 6 bar, Compressed air has to be dry and oil-free (DIN ISO 8573-1)   |
| Weight                     | Up from 35 kg (depending on version)  |
| Power Connection           | 91 up to 263 VAC, 50/60 Hz, 5 Ampere  |
| Environmental Conditions   | Temperature: 10° C up to 35° C, 2 up to 95 % relative air   |

|                      |  |
|----------------------|--|
|                      | humidity,<br>non-condensing  |
| <b>Certification</b> | CE-Declaration of Conformity   |
| <b>Options</b>       | 3-coloured alarm lamp<br>IPC in protective housing<br>LLS Legitronic® Labeling<br>Software<br>Bluhmware for controlling and<br>networking the systems<br>attendance check of labels<br>Product sensors<br>sensor for variable stroke<br>stands in different versions<br>(fixed, adjustable via spindle,<br>mobile) |
| <b>Applicators</b>   | linear stroke 250mm with<br>stepper motor  |
| <b>Dimensions</b>    |  |

---

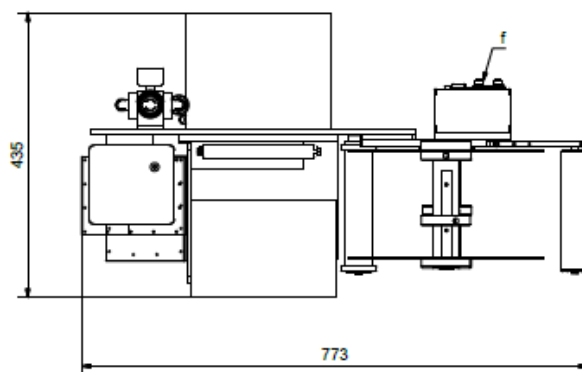
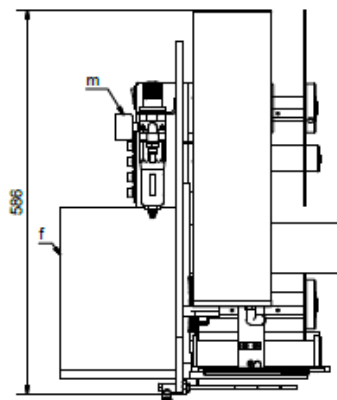
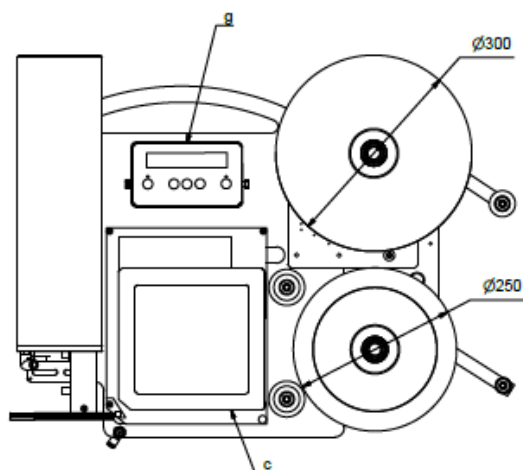
### Distribution arguments depending on system

- print engine technology of leading global manufacturers
- all moving applicators are driven by stepper motor
- Europe-wide distribution
- very compact construction with a large spectrum of enhancement
- developed for day and night operation
- all components and also spare parts are standard and originated from large-volume production
- simple and well-arranged system structure enables the customer's technicians quick self-help measures in case of errors
- large consultant and service network

| Technical Specifications (in detail):       |  |
|---|--|
| Base Plate                                  | 10 mm aluminum anodised  |
| Housing of Applicator Controller            | anodised aluminum profile tube   |
| Housing of Print Engine Connections         | -  |
| Cabinet without fan                         | -  |
| Festo Pneumatics                            | 0%   |
| Gauge                                       | -  |
| Mechanical Components                       | metric   |
| Modules / Replacement-Assemblies            | standard   |
| Display Lighting                            | aluminum anodised  |
| (Remote) Display Remote mountable           | standard   |
| Display turnable                            | user-defined   |
| Multilingual Display-Menu                   | EN, DE, FR, NL, NO, SE, RU, PL, ES, TR, PT, IT, CZ, HR, Optional: AZ, FI, HU, LV |
| Detailed Status and Error Messages          | standard   |
| Diagnostic Function Diagnosis Monitor       | via display and USB  |
| Adjustable cycle time of valves             | in 1 ms steps  |
| Service/Maintenance Counter Service Message | yes, display message + volt free contact   |
| Variants of Applicator                      | 1  |
| Printer                                     | flexible print engine technique: Datamax, Sato, Zebra, Avery, CAB                |
| LH / RH                                     | yes, at the same price   |
| Max. Tamp (mm)                              | 20000mm <sup>2</sup> or 200mm long or 160mm wide                                 |
| Max. Label (mm)                             | 20000mm <sup>2</sup> or 200mm long or 160mm wide                                 |
| Min. Tamp (mm)                              | 10 x 5   |
| Min. Label (mm)                             | 10 x 5   |
| Max. Stroke (useable)                       | 200 mm   |
| Max. Stroke (useable; optional)             | -  |

|   |   |
|---|---|
| Recommended continuous power rating with max. stroke standard applicator<br>PPM=products per minute | 3-shift, because of robust applicator construction no limitation for continuous operation |
| Top performance with max. stroke standard applicator  | no difference to continuous rating  |
| Top performance with KH High Speed Unit (small label, min. stroke)                                  | -   |
| Top performance with Blow Box   | < 70 per min  |
| Tolerance of Label Position (standard applicator)   | ± 1mm   |
| Tolerance of Label Position (precision applicator)  | -   |
| Tolerance of Label Position (Wipe-on mode)  | -   |
| Alarm Lamp<br>M12 connector   | standard  |
| 1st Product Sensor<br>M12 connector   | standard  |
| 2nd Product Sensor<br>M12 connector   | standard  |
| Product Sensor configuration NPN/PNP  | via display   |
| Possibilities of configuration via PC   | standard / USB  |
| Signal exchange to customer via volt free contact   | standard  |
| Max. Roll Diameter  | 300 mm  |
| Max. Run Width  | 160 mm<br>optional: 173 mm  |
| Unwind Discs  | standard  |
| Rewind (stepper motor technique)  | standard  |
| Quick Change  | option  |
| Variable Product Detection  | option  |
| Low Label Prewarning  | option  |
| Control Label on Tamp Pad   | standard  |
| 2-level Vacuum  | -   |
| Service – Export Possibility  | D, A, CH, B, DK, NL, F, E, I, P, UK, IRL, N, S  |

Possibility to save and recall label data in the labeler



**NOTE:**

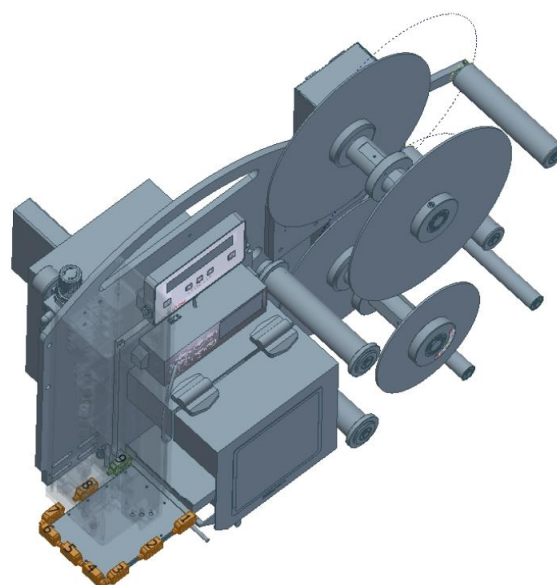
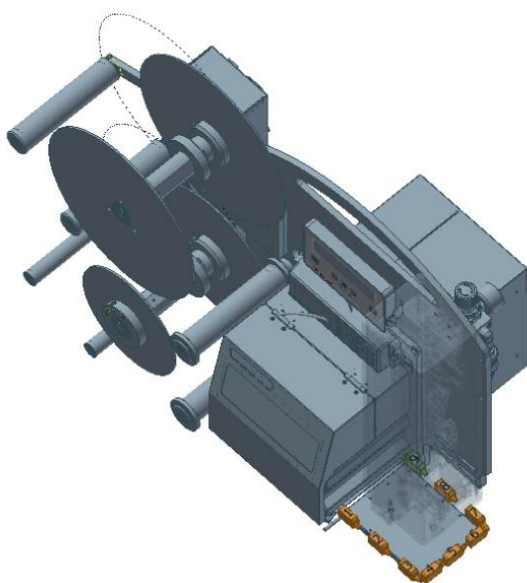
- there is NO LAN port on the rewinder (the system cannot be controlled via Ethernet without additional tools)

## Feasible Positions Sensor var. stroke sensor mounting

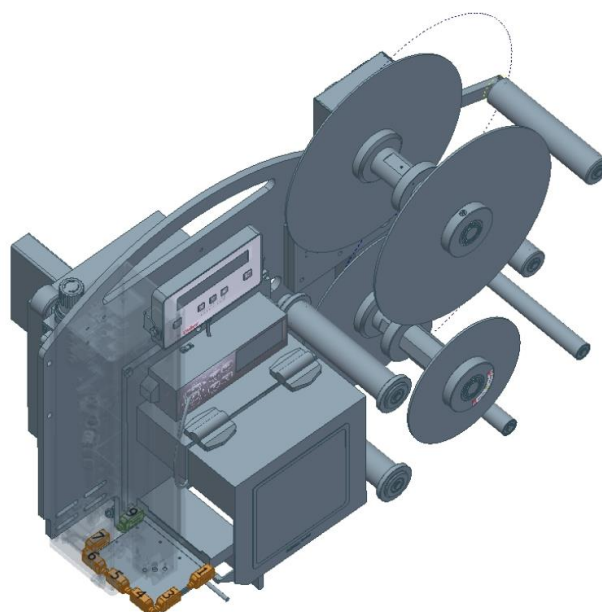
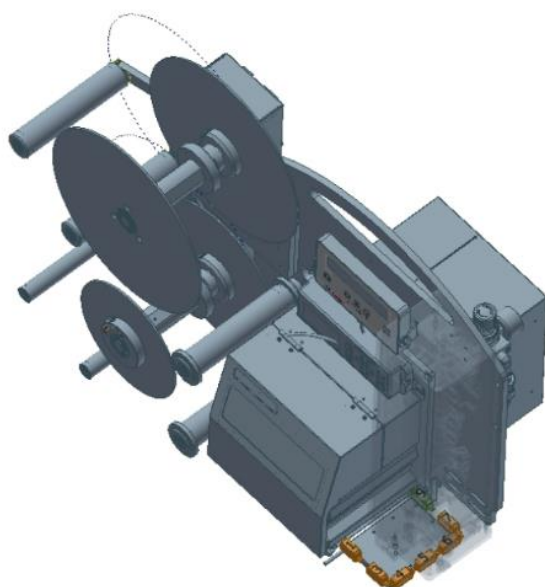
green: stand. position

yellow: optional position

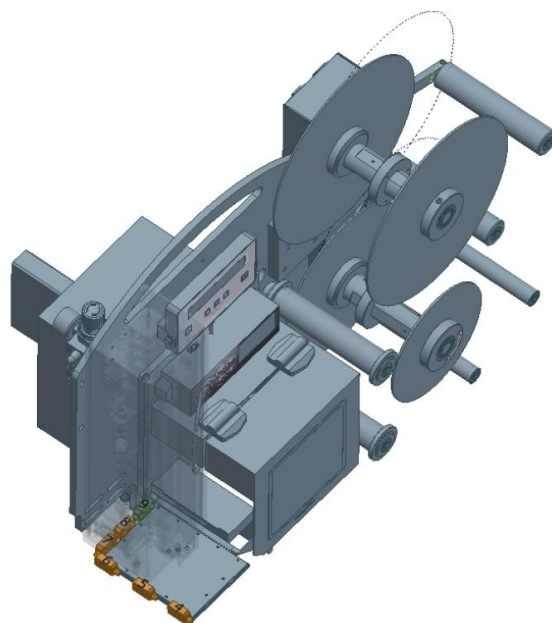
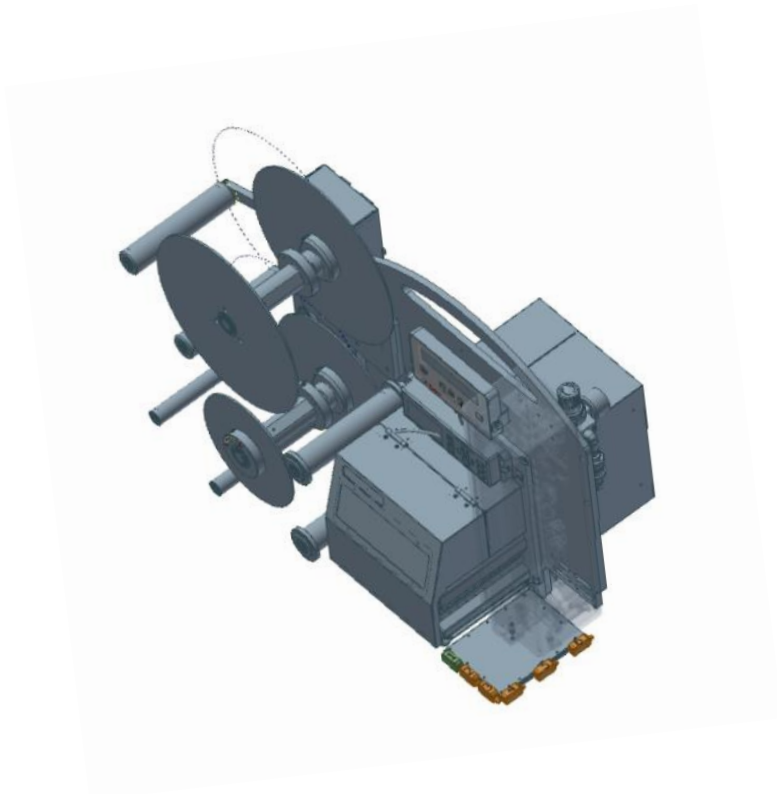
LA4050B-RH/LH-Var\_stroke\_Sensor positioning **120x160**:



LA4050B-RH/LH-Var\_stroke\_Sensor positioning **120x90**:



LA4050B-RH/LH-Var\_stroke\_Sensor positioning **160x123**:



Stand adapter-4050B → 40087593

- Alternative to the stand. U-arm
- Dimensions and angle of inclination in the drawing
- Projection: 330mm
- Angle of inclination:  $\pm 7.5^\circ$ .

